

GUIDE

ePRODUCT



TechniStone[®]
A WILSONART COMPANY

Contents

Our Story	3	Sustainability	36
About the Product	4	Environment and Sustainability Report	37
TechniStone® Material Use	5	References	38
Technical Information	7	One-Stop Information Hub for Professionals	40
Color Range 2026	9	Website	41
R&D	30	Where to Buy	42
Production	31	Inspiration	43
Certification	32	Social Media	44
Standards	33	Stone with Soul	46
Warranty	34	Customer Service	47
Maintenance and Cleaning	35		



Our Story

Technistone was founded in 1991 and is one of Europe's largest producers of engineered stone. The company has branches and distributors in dozens of countries all over the world. In 2019 Technistone became part of the American corporation Wilsonart® Engineered Surfaces, a leading producer and distributor of materials for building interiors. Wilsonart® Engineered Surfaces are inspired by nature to transform spaces and give them the look you want — and the performance you need.

We're proudly part of Wilsonart® Engineered Surfaces, driven by a mission to create surfaces people love, with service they can count on, delivered by people who care.

Together Wilsonart have enjoyed 60 years of innovation, design and production of beautiful surfaces with no intention of slowing down. Wilsonart® Engineered Surfaces was grown from a little company called Ralph Wilson Plastics founded in Temple, Texas, USA in 1956.

The technical properties of engineered stone and Technistone's wide range of decors make our products ideal for use in kitchen and bathroom countertops, bartops, tiling, staircases, wall cladding, and more. Many designer projects, modern private residences, and commercial and industrial spaces have been fitted with engineered stone by Technistone.



[More about Technistone](#)



bretlon



TechniStone®
A WILSONART COMPANY

About the Product

High durability, ease of maintenance, and attractive appearance have made engineered stone the material of choice for an increasing number of consumers worldwide. Our stone slabs are manufactured using natural mineral materials and colored pigments that are bonded with polyester resin. In addition, we use recycled glass and mirror shards in some products. Vibration under vacuum during pressing and subsequent polishing helps to achieve the non-porosity, which distinguishes engineered stone from natural stone and gives it greater resistance to staining. Natural mineral materials also provide higher scratch resistance.

Technistone's manufacturing process is subject to strict European standards that are applied to both raw material inputs and the final product. TechniStone® products are produced in large size slabs in several thicknesses, which have a wide range of applications in both the private and the commercial sectors.



TechniStone® Material Use

Kitchen countertops

Kitchen wall cladding

Bars, dinner tables

Bathroom vanity tops

Shower and bathtub cladding

Interior wall cladding

Window sills

Wall decorations

Washbasins*

Sinks*

*After consultation with the fabricator.



Application
possibilities





Easy Maintenance
& Cleaning



Suitable for Food
Contact



Natural
Raw Materials



Long Lifetime
& Durability



Highly Scratch
Resistant



Highly Stain & Natural
Acid Resistant



Waterproof



Highly Bacteria
Resistant



Technical Information

Slab Dimensions

Jumbo 155: 3185 mm × 1550 mm = 4,94 m²

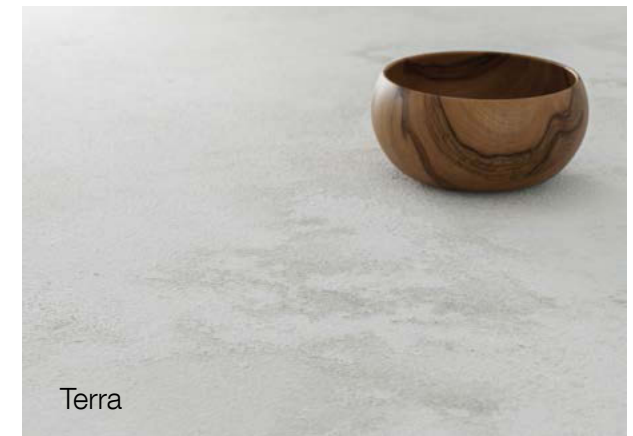
Jumbo 160: 3200 mm × 1600 mm = 5,12 m²

Jumbo 165: 3300 mm × 1650 mm = 5,45 m²

Thicknesses

20 mm ; 30 mm

Finishes



Slabs thickness and weight

SLAB THICKNESS	WEIGHT 1 m ²	WEIGHT OF THE SLAB
Jumbo 155 size: 12 mm	30 kg	147 kg
Jumbo 155 size: 20 mm	50 kg	245 kg
Jumbo 155 size: 30 mm	74 kg	367 kg
Jumbo 160 size: 20 mm	50 kg	254 kg
Jumbo 160 size: 30 mm	74 kg	381 kg
Jumbo 165 size: 20 mm	49 kg	268 kg
Jumbo 165 size: 30 mm	74 kg	402 kg



**Physical-mechanical
Characteristics**

Wilsonart®

ENGINEERED SURFACES



Color Range 2026

UNIQUE DESIGNS

Mistral White

Taj Mahal Gold

Badal Grey

Elysian Gold

Duna Beige

Morning Daisy

Wedding Lily

Wild Yucca

Calacatta Olympos

Calacatta Volegno

Calacatta Serchio

Altamonte

Mystery White

Verde Peak

Bronze Coast

Glencoe

Residente Dark

Pearl Delta

LIGHT DESIGNS

Crystal Absolute White

Noble Areti Bianco

Noble Supreme White

Brilliant White

Crystal Polar White

Crystal Nevada

Brilliant Arabesco

Noble Arco

Noble Quartzite

Noble Pro Frost

Noble Vintage

Elegance Eco Nev

Starlight White

Noble Carrara

Noble Olympos Mist

Noble Ivory White

Crystal Royal

Harmonia Navajo

Taurus Terazzo White

DARK DESIGNS

Noble Portland Grey

Noble Concrete Grey

Noble Pro Cloud

Gobi Urban

Noble Pro Storm

Noble Pietra Grey

Noble Athos Brown

Gobi Black

Taurus Black

Brilliant Black

Starlight Black



[View online](#)

TechniStone®
A WILSONART COMPANY



Mistral White

Finish Polished
Size Jumbo 155
Thickness 20 mm, 30 mm



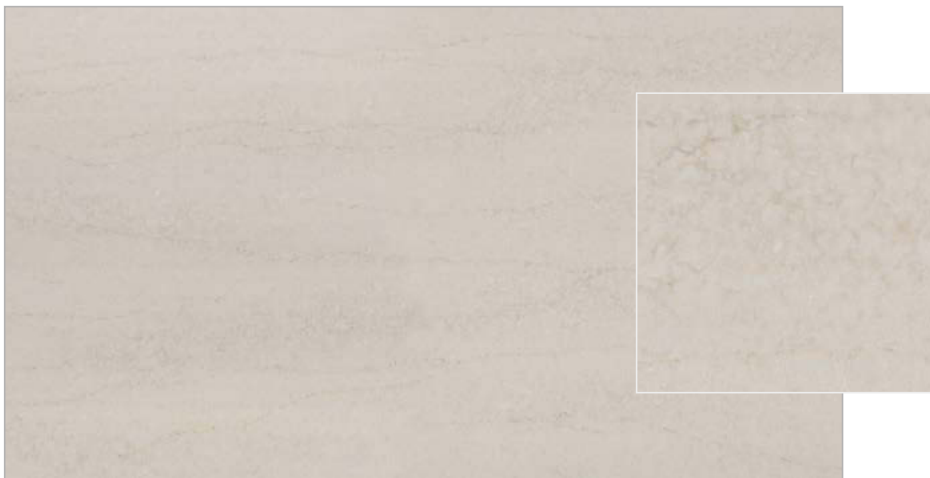
Video



Reference
photo



Website
detail



Taj Mahal Gold

Finish Polished, matt
Size Jumbo 155
Thickness 20 mm, 30 mm



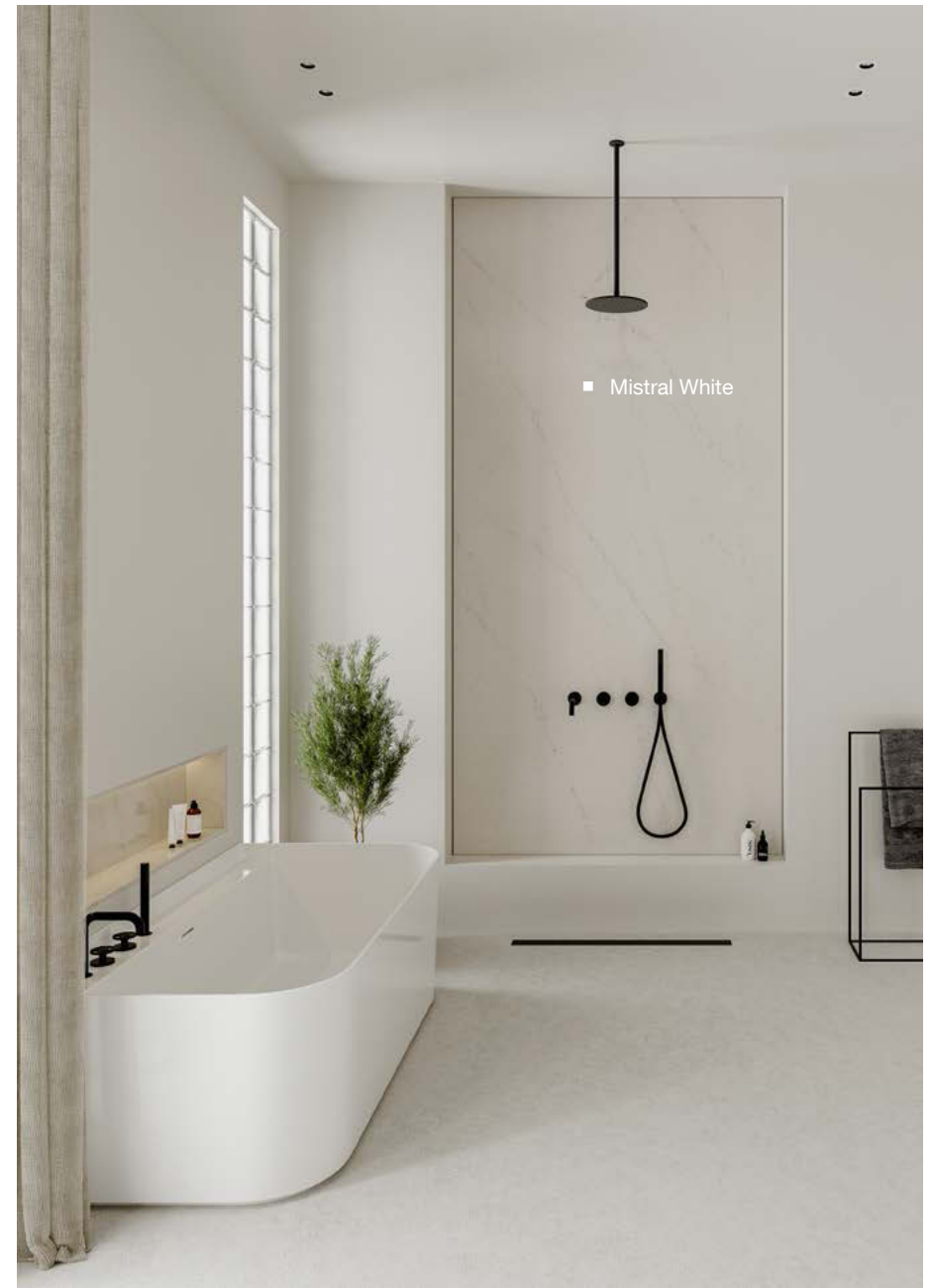
Video



Reference
photo



Website
detail





Badal Grey

Finish Polished
 Size Jumbo 155
 Thickness 20 mm, 30 mm



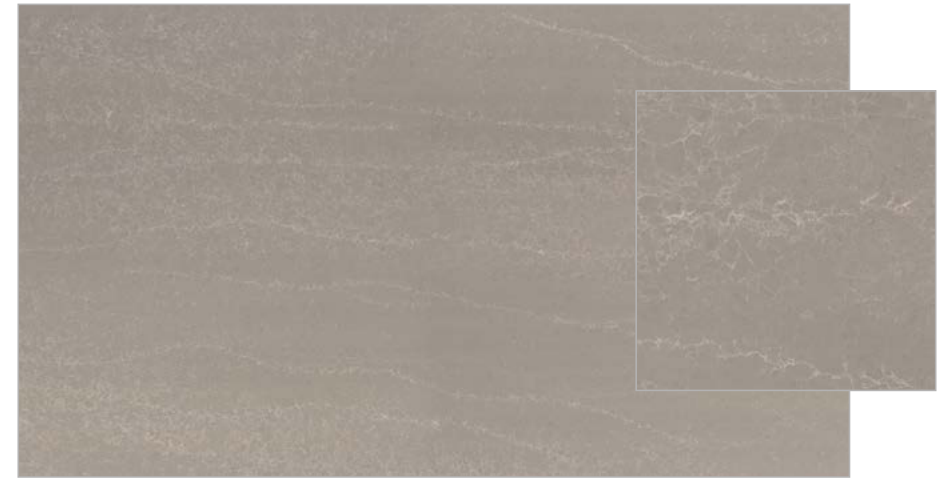
Video



Reference
photo



Website
detail



Duna Beige

Finish Polished
 Size Jumbo 155
 Thickness 20 mm, 30 mm



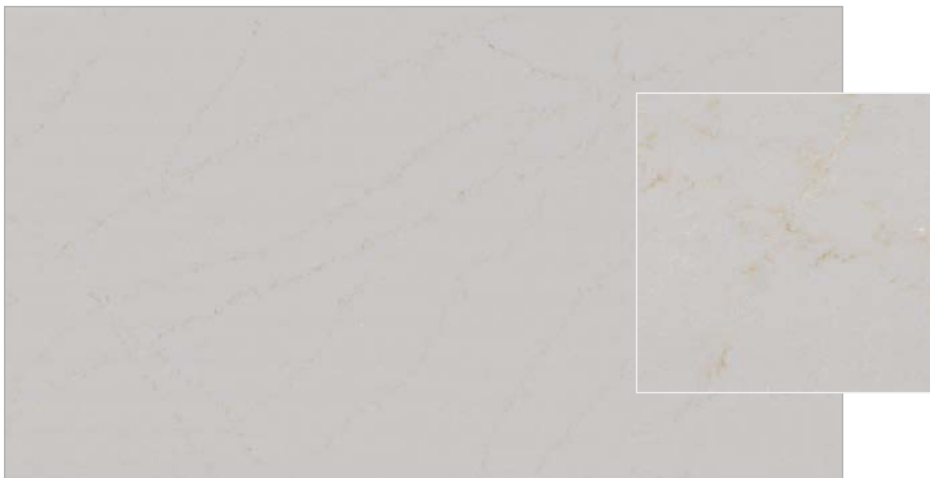
Video



Reference
photo



Website
detail



Elysian Gold

Finish Polished
 Size Jumbo 155
 Thickness 20 mm, 30 mm



Video



Reference
photo



Website
detail





Morning Daisy

Finish Polished, matt
 Size Jumbo 155
 Thickness 20 mm, 30 mm



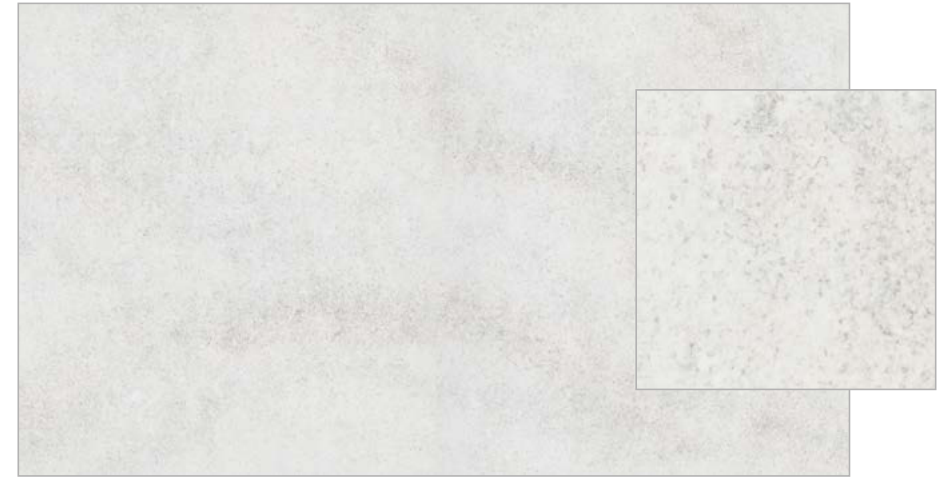
Video



Reference
photo



Website
detail



Wedding Lily

Finish Polished, matt
 Size Jumbo 155
 Thickness 20 mm, 30 mm



Video



Reference
photo



Website
detail



■ Wild Yucca



Wild Yucca

Finish Polished
 Size Jumbo 155
 Thickness 20 mm, 30 mm



Video



Reference
photo



Website
detail



Calacatta Olympos

Finish Polished
Size Jumbo 165
Thickness 20 mm, 30 mm



Video



Reference photo



Website detail



Calacatta Serchio

Finish Polished
Size Jumbo 165
Thickness 20 mm, 30 mm



Video



Reference photo



Website detail



Calacatta Volegno

Finish Polished
Size Jumbo 165
Thickness 20 mm, 30 mm



Video



Reference photo



Website detail



■ Calacatta Volegno



■ Altamonte



Altamonte

Finish Polished
 Size Jumbo 165
 Thickness 20 mm, 30 mm



Video



Reference photo



Website detail



Mystery White

Finish Polished
 Size Jumbo 160
 Thickness 20 mm, 30 mm



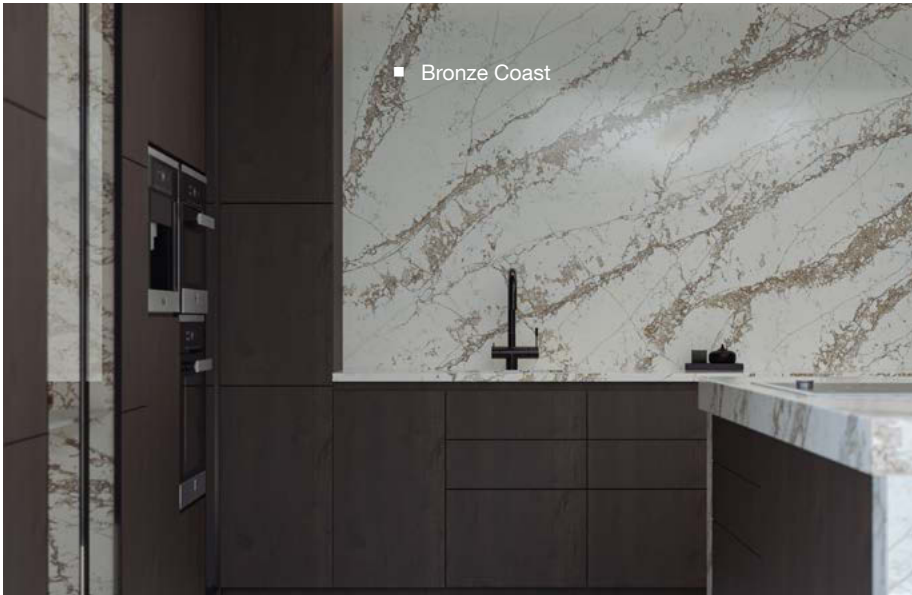
Video



Reference photo



Website detail



■ Bronze Coast



Bronze Coast

Finish Polished
 Size Jumbo 165
 Thickness 20 mm, 30 mm



Video



Reference photo



Website detail



Verde Peak

Finish Polished
 Size Jumbo 165
 Thickness 20 mm, 30 mm



Video



Reference photo



Website detail



Glencoe

Finish Polished
 Size Jumbo 165
 Thickness 20 mm, 30 mm



Video



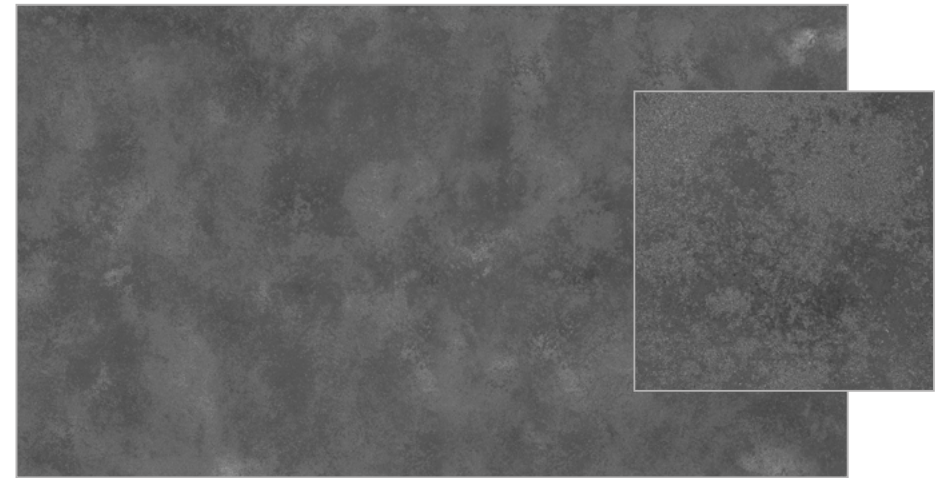
Reference photo



Website detail



■ Pearl Delta



Residente Dark

Finish Terra
 Size Jumbo 160
 Thickness 20 mm



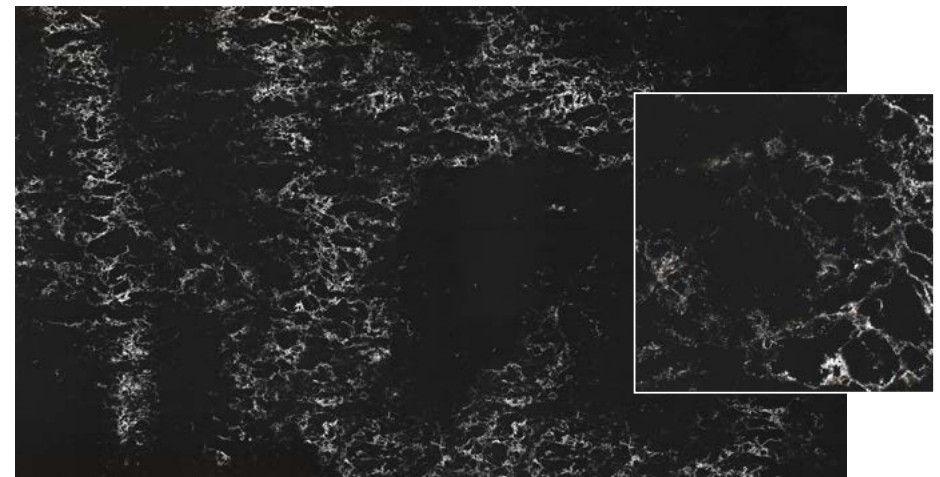
Video



Reference photo



Website detail



Pearl Delta

Finish Polished
 Size Jumbo 155
 Thickness 20 mm, 30 mm
 Recycled materials 40%



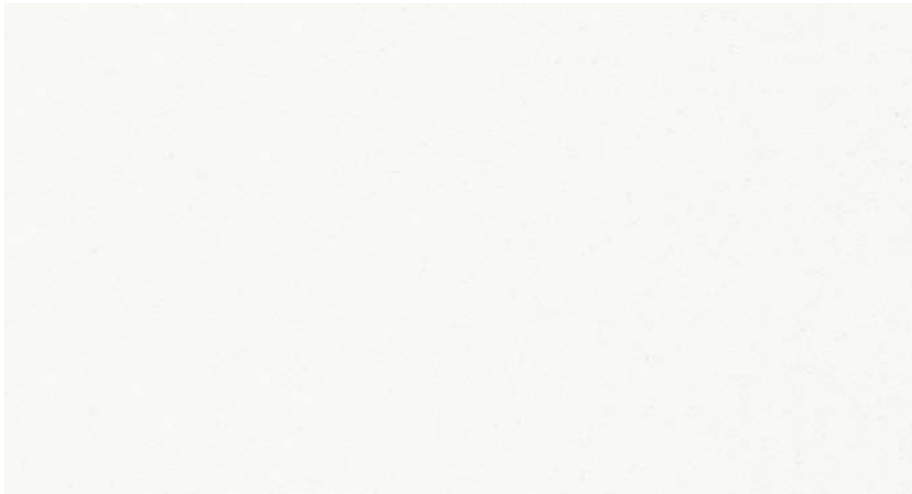
Video



Reference photo



Website detail



Crystal Absolute White

Finish Polished
Size Jumbo 155
Thickness 20 mm, 30 mm



Reference photo



Website detail



Noble Supreme White

Finish Polished
Size Jumbo 155
Thickness 20 mm, 30 mm



Reference photo



Website detail



Noble Areti Bianco

Finish Polished
Size Jumbo 155
Thickness 20 mm, 30 mm



Video



Reference photo



Website detail



Brilliant White

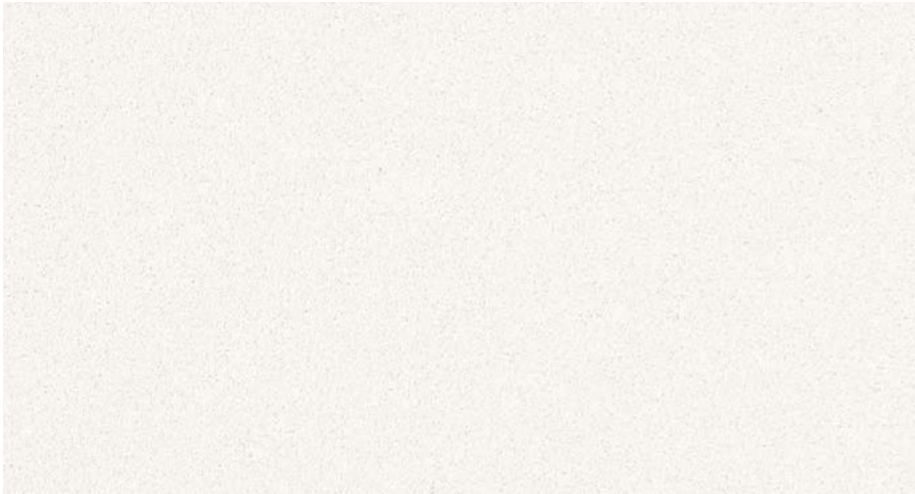
Finish Polished
Size Jumbo 155
Thickness 20 mm, 30 mm
Recycled materials 30%



Reference photo



Website detail



Crystal Polar White

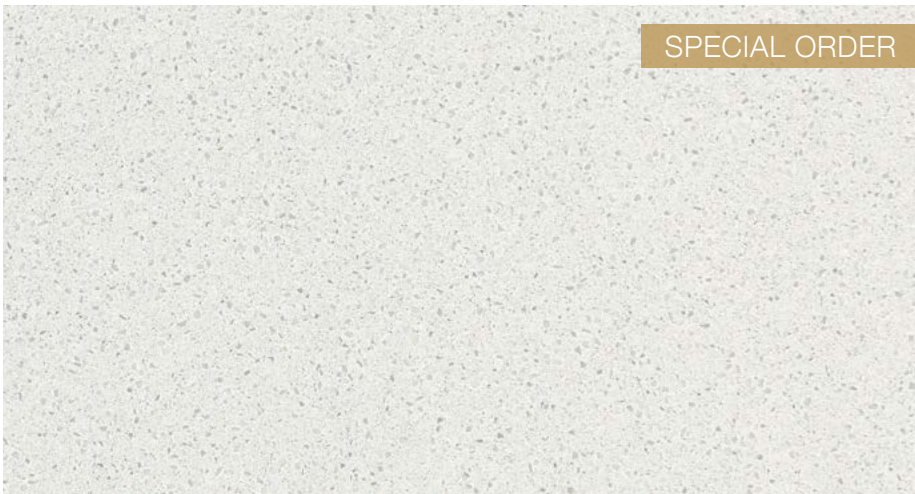
Finish Polished
Size Jumbo 155
Thickness 20 mm, 30 mm



Reference photo



Website detail



SPECIAL ORDER

Crystal Nevada

Finish Polished
Size Jumbo 155
Thickness 20 mm



Reference photo



Website detail



Brilliant Arabesco

Finish Polished
Size Jumbo 155
Thickness 20 mm, 30 mm
Recycled materials 30%



Video



Reference photo



Website detail



Noble Arco

Finish Polished
 Size Jumbo 155
 Thickness 20 mm, 30 mm



Video



Reference photo



Website detail



Noble Quartzite

Finish Polished, matt
 Size Jumbo 155
 Thickness 20 mm, 30 mm



Video



Reference photo



Website detail



Noble Pro Frost

Finish Polished
 Size Jumbo 155
 Thickness 20 mm, 30 mm



Video



Reference photo



Website detail



Noble Vintage

Finish Polished, matt
Size Jumbo 155
Thickness 20 mm, 30 mm



Video



Reference
photo



Website
detail



Elegance Eco Nev

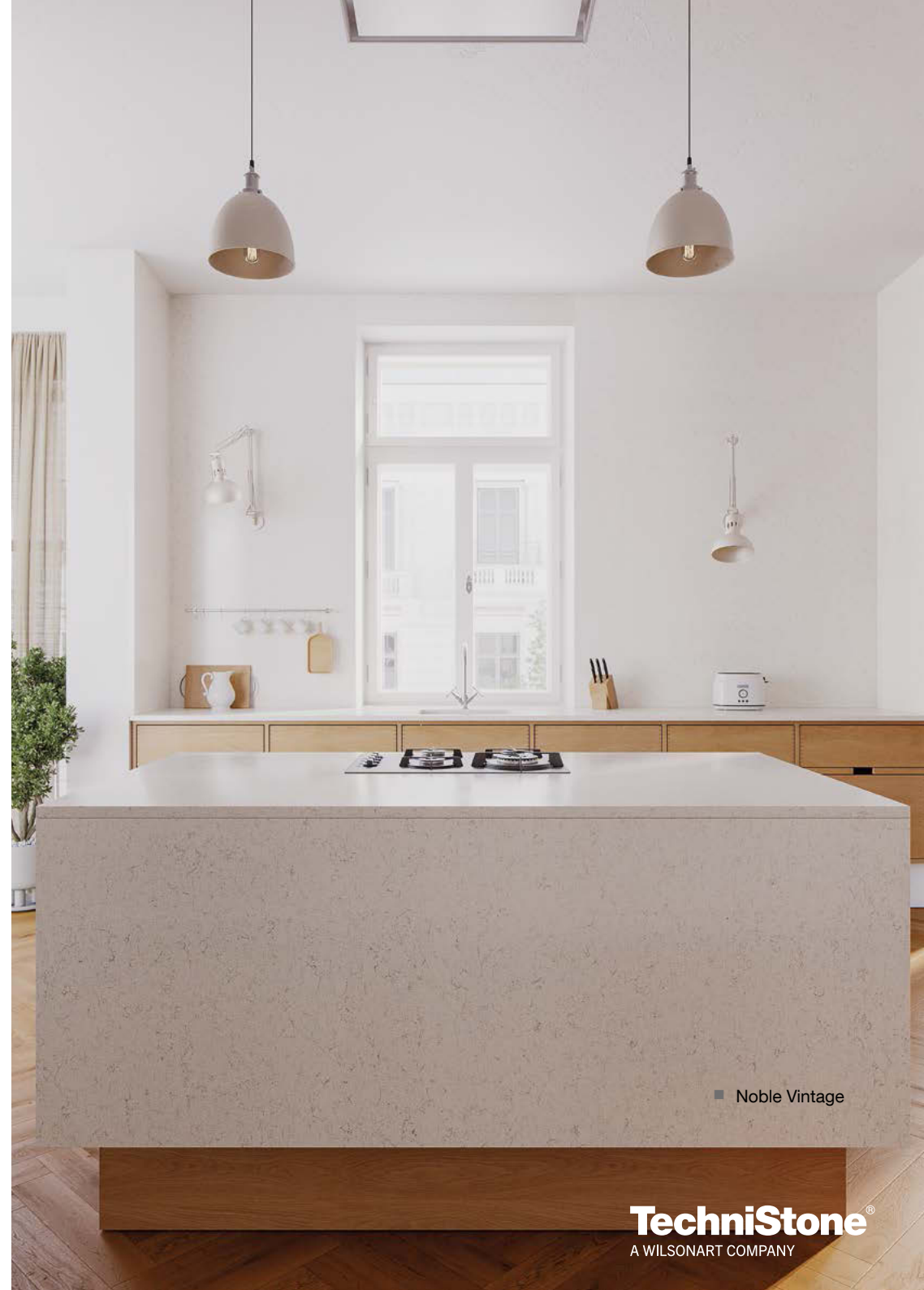
Finish Polished
Size Jumbo 155
Thickness 20 mm, 30 mm
Recycled materials 30%



Reference
photo



Website
detail



■ Noble Vintage

TechniStone[®]
A WILSONART COMPANY



Starlight White

Finish Polished
 Size Jumbo 155
 Thickness 20 mm, 30 mm
 Recycled materials 40%



Reference photo



Website detail



Noble Carrara

Finish Polished
 Size Jumbo 155
 Thickness 20 mm, 30 mm



Reference photo



Website detail



Noble Olympos Mist

Finish Polished
 Size Jumbo 155
 Thickness 20 mm



Video



Reference photo



Website detail



Noble Ivory White

Finish Polished
 Size Jumbo 155
 Thickness 20 mm, 30 mm



Reference photo



Website detail



Crystal Royal

Finish Polished
 Size Jumbo 155
 Thickness 20 mm, 30 mm



Reference photo



Website detail



Harmonia Navajo

Finish Polished
 Size Jumbo 155
 Thickness 20 mm, 30 mm



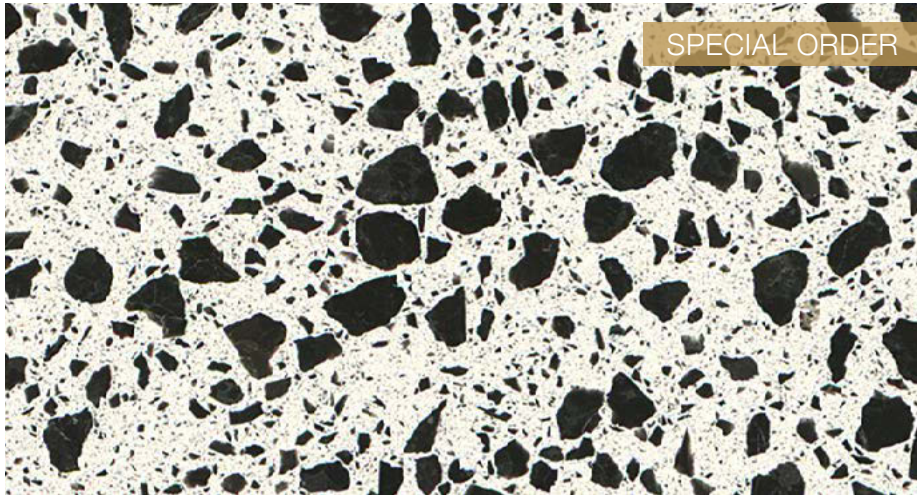
Video



Reference photo



Website detail



Taurus Terazzo White

Finish Polished
Size Jumbo 155
Thickness 20 mm
Recycled materials 40%



Video



Reference
photo



Website
detail



Noble Portland Grey

Finish Polished, matt
Size Jumbo 155
Thickness 20 mm



Video

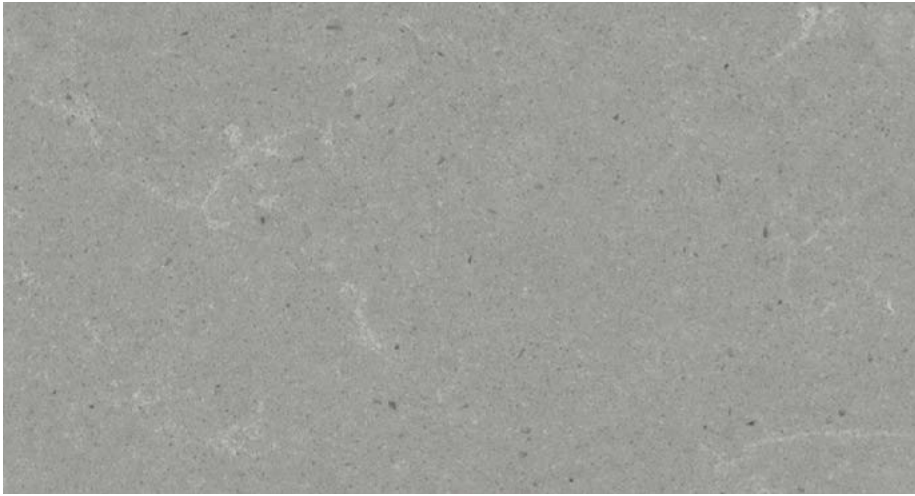


Reference
photo



Website
detail





Noble Concrete Grey

Finish Polished, matt
Size Jumbo 155
Thickness 20 mm, 30 mm



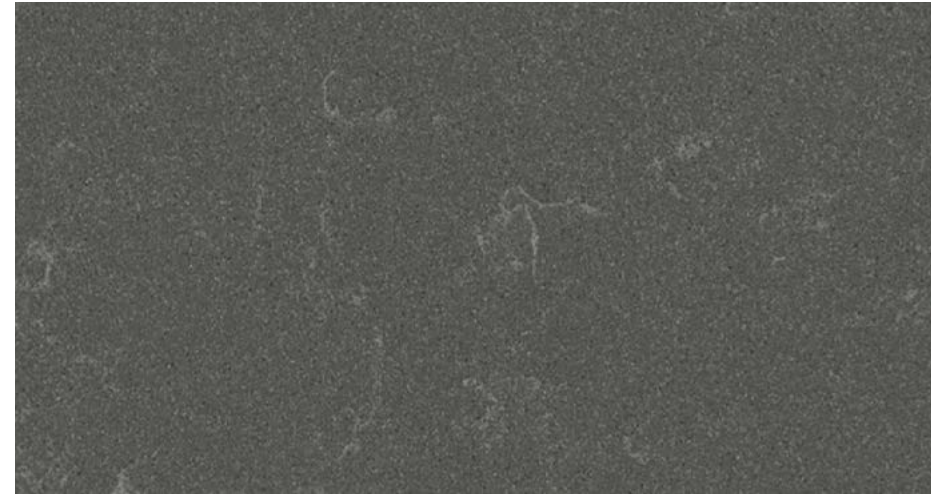
Video



Reference
photo



Website
detail



Noble Pro Cloud

Finish Polished
Size Jumbo 155
Thickness 20 mm, 30 mm



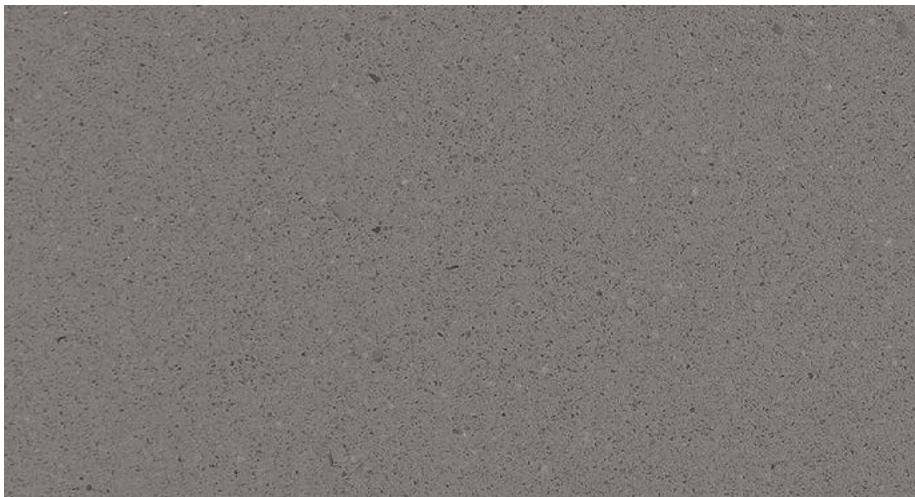
Video



Reference
photo



Website
detail



Gobi Urban

Finish Polished, matt
Size Jumbo 155
Thickness 20 mm, 30 mm



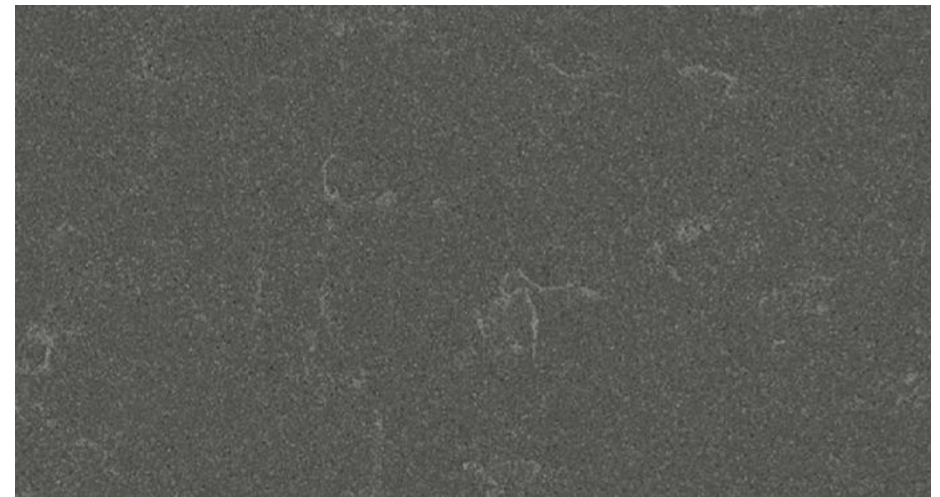
Video



Reference
photo



Website
detail



Noble Pro Storm

Finish Polished
Size Jumbo 155
Thickness 20 mm, 30 mm



Video



Reference
photo



Website
detail



■ Noble Concrete Grey



■ Noble Athos Brown



Noble Pietra Grey

Finish Polished
 Size Jumbo 155
 Thickness 20 mm, 30 mm



Reference
photo



Website
detail



Noble Athos Brown

Finish Polished
 Size Jumbo 155
 Thickness 20 mm, 30 mm



Reference
photo



Website
detail

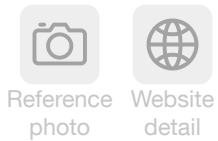


■ Taurus Black



Gobi Black

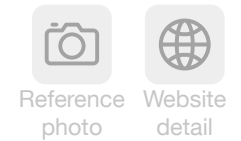
Finish Polished
 Size Jumbo 155
 Thickness 20 mm, 30 mm
 Recycled materials 40%

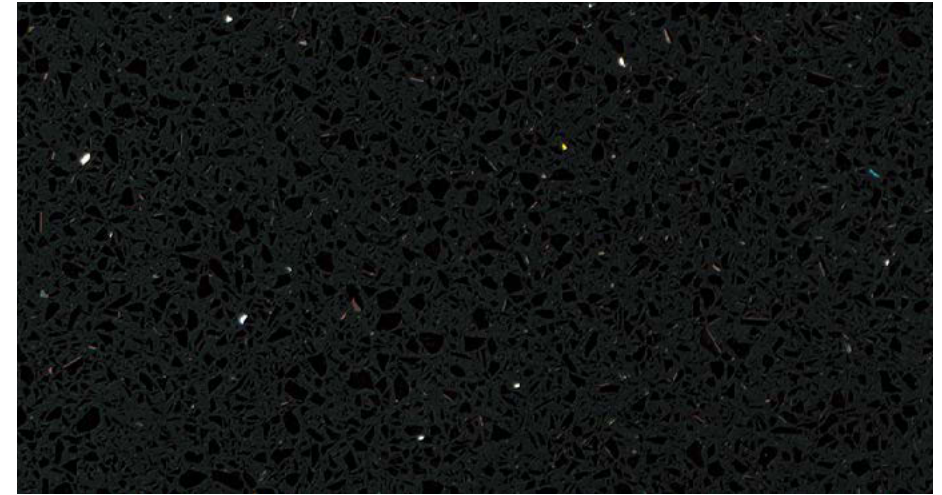


SPECIAL ORDER

Taurus Black

Finish Polished
 Size Jumbo 155
 Thickness 20 mm
 Recycled materials 50%





Brilliant Black

Finish Polished
 Size Jumbo 155
 Thickness 20 mm, 30 mm
 Recycled materials 40%



Reference photo



Website detail

Starlight Black

Finish Polished
 Size Jumbo 155
 Thickness 20 mm, 30 mm
 Recycled materials 70%
 Tiles



Reference photo



Website detail



■ Starlight Black

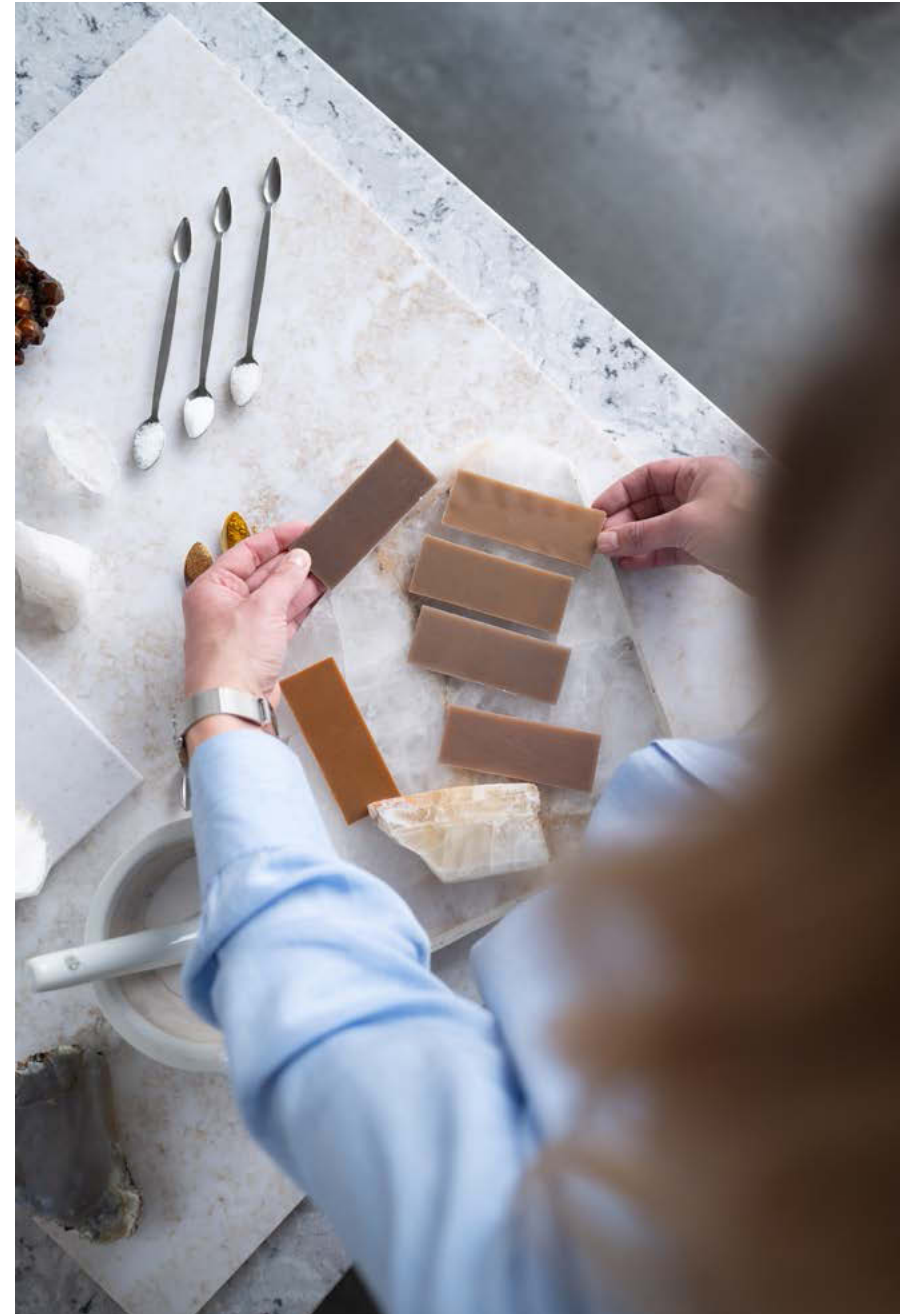


■ Noble Ivory White
Pavlis Studio, BekArch, Tino Kuskunis

R&D

Today, engineered stone is registering one of the most dynamic growth patterns of any material used in building interiors worldwide. This is due to its high utility and its many different decors, which reflect the latest design trends. Research and product development is mainly provided by our own capacities and the implementation of research activities is one of the most important long-term goals of Technistone.

Technistone produces approximately 80,000 m² of engineered stone every month, an area equivalent to eleven football pitches.



Production

Preparation of Raw Material Inputs

Raw materials used to produce TechniStone® are carefully inspected, graded and cleaned.

The resin is stored in tanks, the aggregate and silica sand are sieved and stored in silos, and the grit from natural mineral materials is kept in big bags.

Glass, mirrors and granite are crushed in machines, while vibrating screens and separators ensure that no unwanted material enters the production line.

Mixing and spreading

The raw materials go into mixing machines and are combined with blended resin.

The entire process is computer-controlled.

The prepared mixture is then poured into a rubber mold to create the TechniStone® slabs.

Pressing and kiln

The mixture is then pressed into a compact sheet using a vibrating press and a vacuum.

The slab, still in a soft state, is pushed into the kiln, where it is cured for the necessary time at a temperature of around 100°C.

Finishing

The slab is measured, calibrated to the required thickness, and then given its final finish.

The finished slab can be cut to almost any required size.



Certification

A list of all products with corresponding certificates can be inspected in the [Origin](#) database. A product portfolio showing material characteristics and product certificates is also available in the [NBS Source](#) database.

The Health Product Declaration Collaborative Protocol examines the chemical substances in a product and compares them with lists of hazardous substances published by government and scientific institutions. TechniStone® does not contain any unauthorized chemicals.

Technistone's products have achieved UL's Greenguard Gold and SCS Global Services' Indoor Advantage certifications. That means they are free of any volatile organic compounds (VOCs) and do not emit any substances that can negatively influence the quality of the air indoors.

Many of Technistone's products contain more than a 20, 30, 40, and in some cases as much as a 70 percent share of recycled content.

TechniStone® complies with strict standards and procedures imposed by the National Sanitation Foundation and its products are safe for contact with food.



More information
about the specific product,
certifications may differ.

Standards



Well-trained personnel inspect and evaluate the quality of all slabs.

An objective color measurement system is used to determine the exact color shade of each slab.

Pilot samples are developed in the lab, aesthetic, physical and mechanical properties of products are improved, raw materials are checked and control tests are performed.

Product Testing According to European Standards

EN 14617-1 (Density, Water absorption)

EN 14617-2 (Flexural strength)

EN 14617-4 (Abrasion)

EN 14617-5 (Freeze thaw resistance)

EN 14617-6 (Thermal Shock resistance)

EN 14617-09 (Impact resistance)

EN 14617-10 (Resistance to Chemicals)

EN 14617-11 (Thermal expansion coefficient)

EN 13501-1 (Flammability)

ČSN 725191 P CEN/TS 16165 (Slipperiness)

American Testing Standards (ASTM)

ASTM C97 (Absorption, Bulk Specific Gravity)

ASTM C99 (Modulus of Rupture)

ASTM C880 (Flexural strength (bending))

ASTM C1028 (Static Coefficient of Friction)

ASTM C650 (Resistance to Chemical Substances)

ASTM C1378 (Resistance to Staining)

ASTM C484 (Thermal Shock Resistance)

ASTM C648 (Breaking Strength)

ASTM C241 (Abrasion Resistance)

ASTM E84 (Flammability)

ASTM E228 (Thermal expansion coefficient)

Warranty

Validity

Technistone offers 25-year warranty on material used in an interior. This warranty does not cover material used in commercial premises, for which there is a five-year warranty.

The 5-year warranty covers slabs installed in areas accessible to the public, beginning with the date of installation.

The warranty must be activated by registering your TechniStone® product on the company's website under the section "Warranty".

The warranty starts the day that the fabricated slabs are installed by a licensed fabricator in the interior living space. Registration must be completed within 30 days of said installation.

The seller is obligated to provide and abide by the warranty information presented to the customer throughout the warranty period, in accordance with these warranty terms.

To process the claim and ensure quick quality service, contact the location where the original TechniStone® slab was purchased.

Provide quality photo documentation of the defects claimed.

During warranty service, the product must be available to the designated Technistone representative to perform a visual inspection and the customer must follow the representative's given instructions.

In the event that a slab replacement is decided, the processing, reinstallation, and associated costs will not be covered by the warranty issued by TechniStone®.

Technistone reserves the right, in agreement with the customer, to replace the defective slab with a new design in the current product offer, which is regularly updated due to development and market requirements.



25-year
warranty



TechniStone®
A WILSONART COMPANY

Maintenance and Cleaning

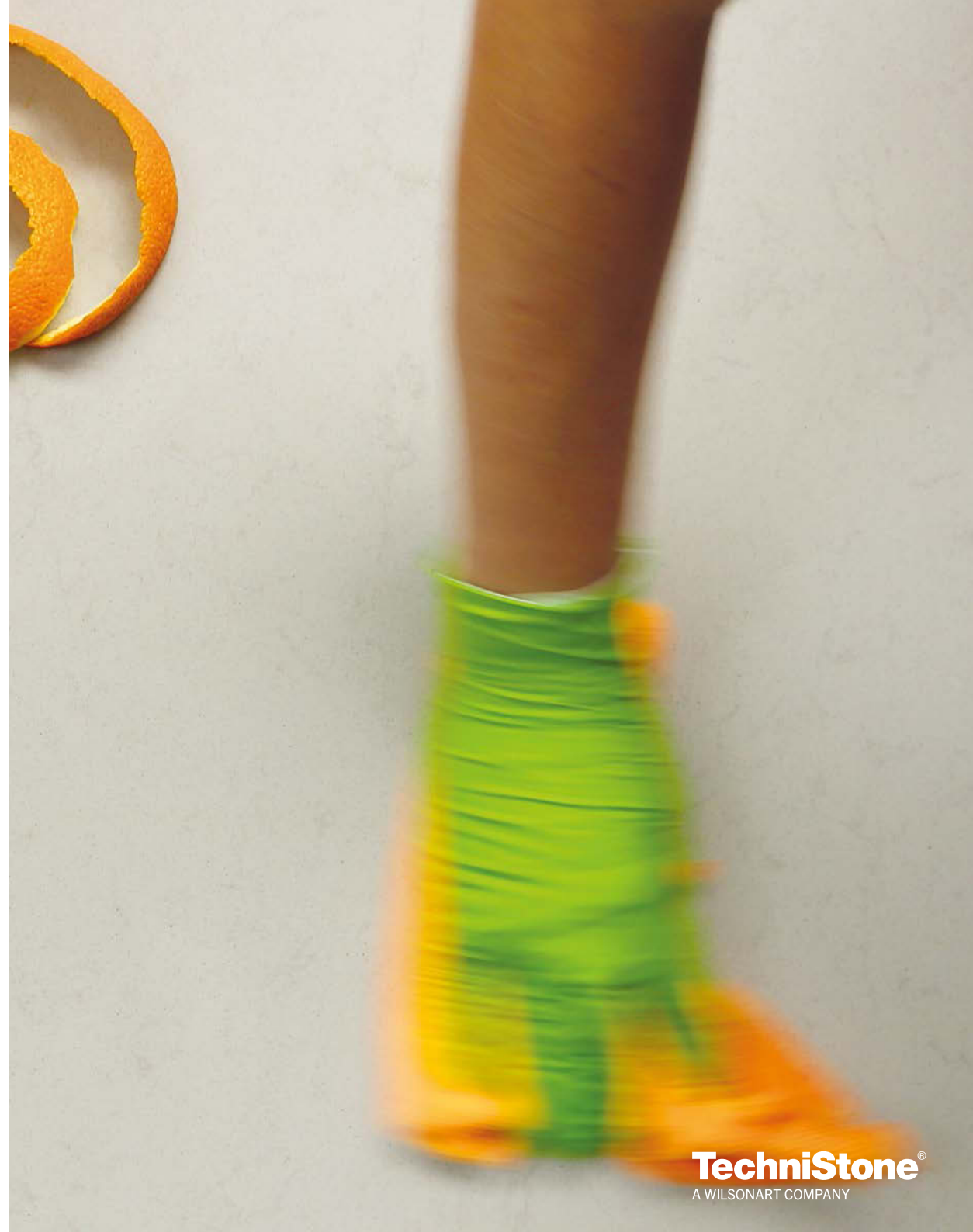
For proper maintenance it is very important to clean the material only with water or neutral detergents.

We recommend using a microfiber cloth to achieve a high surface gloss.

Cutting directly on the worktop is not recommended.

Prolonged exposure to aggressive cleaners may damage the surface of the product!

Insulating pads must be used under hot objects.



**Product
maintenance**

Sustainability

Living in harmony with nature and not taking its beauty for granted. At Technistone, we do our best to preserve nature's resources while being as considerate as possible in our operations.

3R We support sustainable development through the three magic Rs, **REDUCE - RECYCLE - REUSE**

By applying these mottos both in production and in our daily lives, we strive to help reduce material waste and preserve natural resources.

1 REDUCE

We **reduce** waste, use resources prudently and reduce the side effects of resource extraction.

2 RECYCLE

We **recycle** unused waste material.

3 REUSE

TechniStone® product can be **reused** in different forms and variations, thus contributing to long-term sustainability. Thanks to the extraordinary properties given by the combination of nature and modern 21st century technology, the material can retain its beauty for many years.



[Discover more](#)

**REDUCE
RECYCLE
REUSE**

TechniStone®
A WILSONART COMPANY

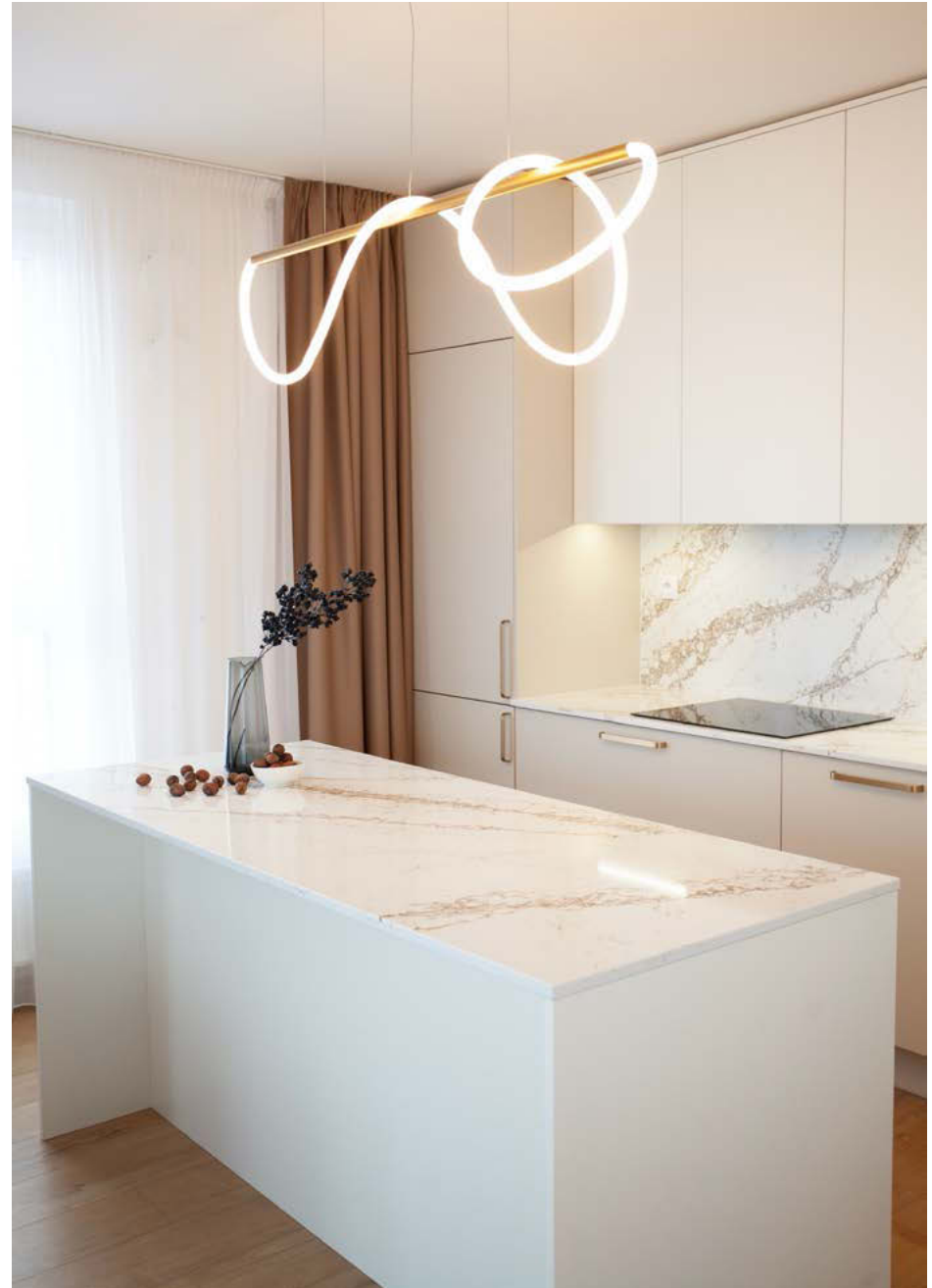
Environment and Sustainability Report



References



[More references](#)





One-Stop Information Hub for Professionals



Architects & Designers



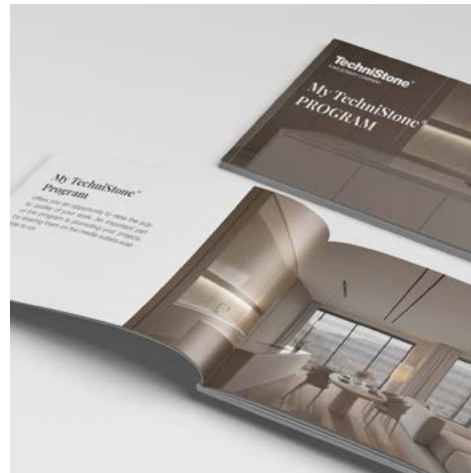
Online brochures



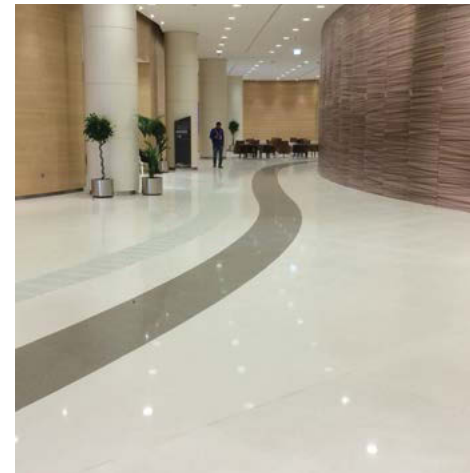
Magazine TechniZONE



PBR data

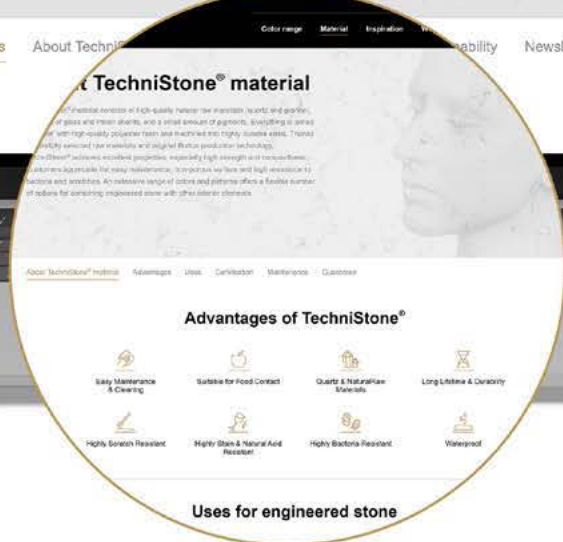
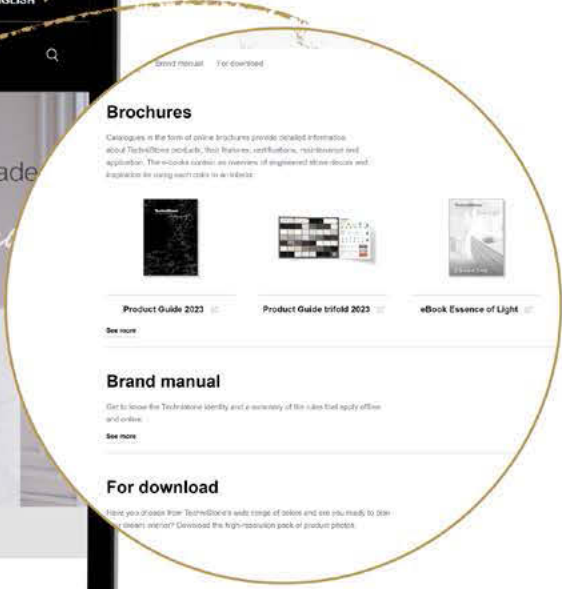
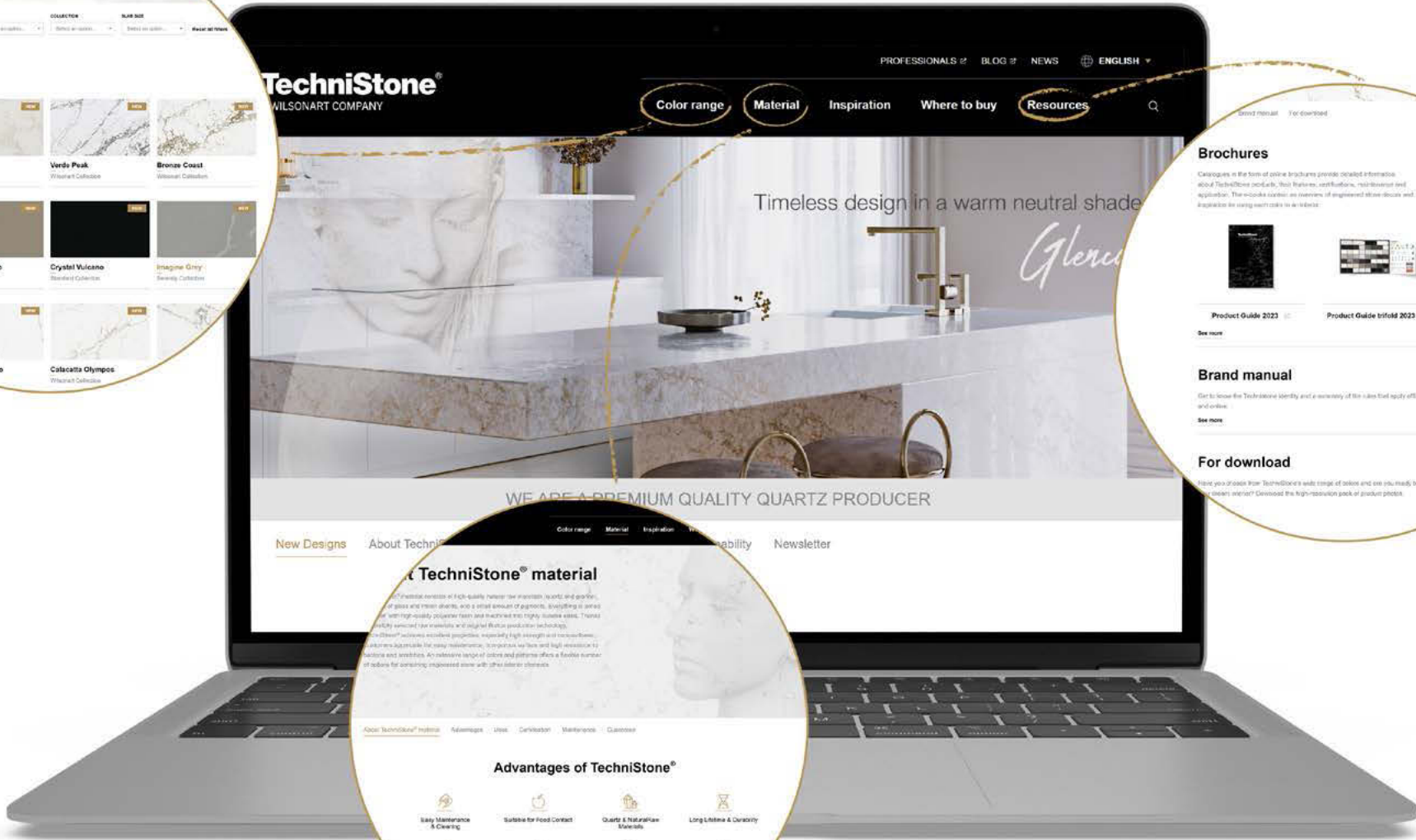
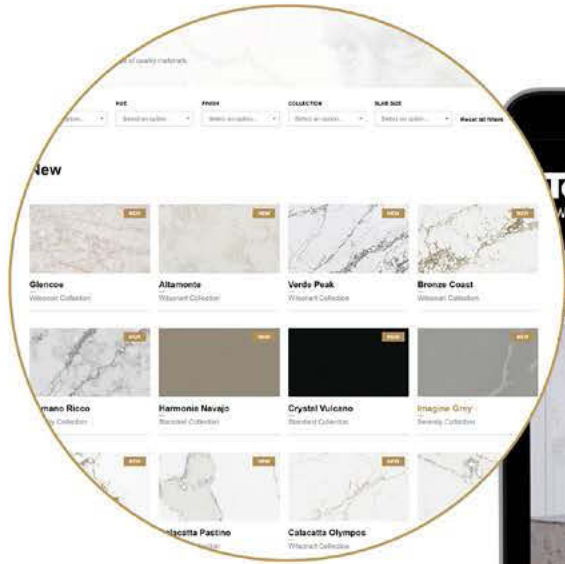


My TechniStone®_program



Projects

Website



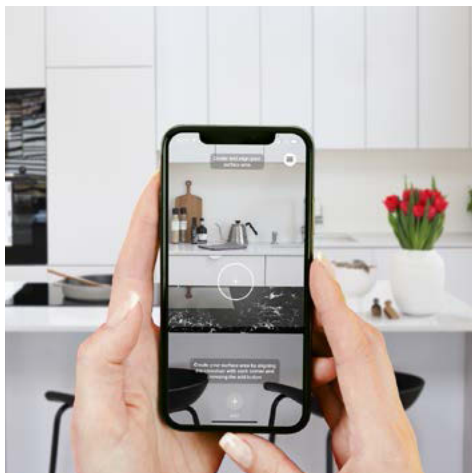
Where to Buy



Find your vendor

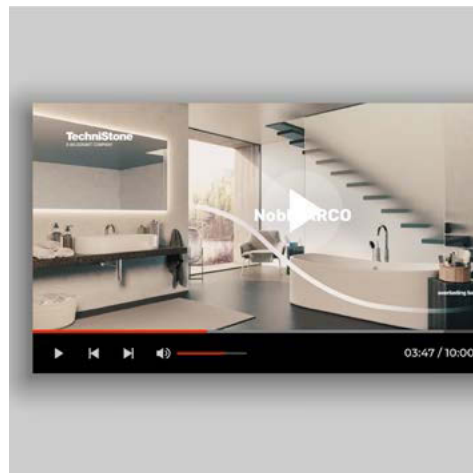


Inspiration

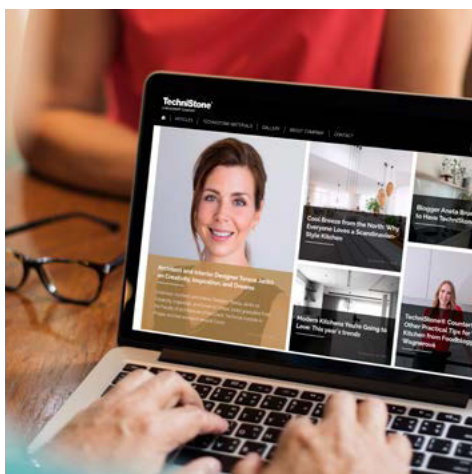


Augmented reality

The reality of your home with new TechniStone® designs and patterns with the Technistone AR



Videogallery



Technistone blog

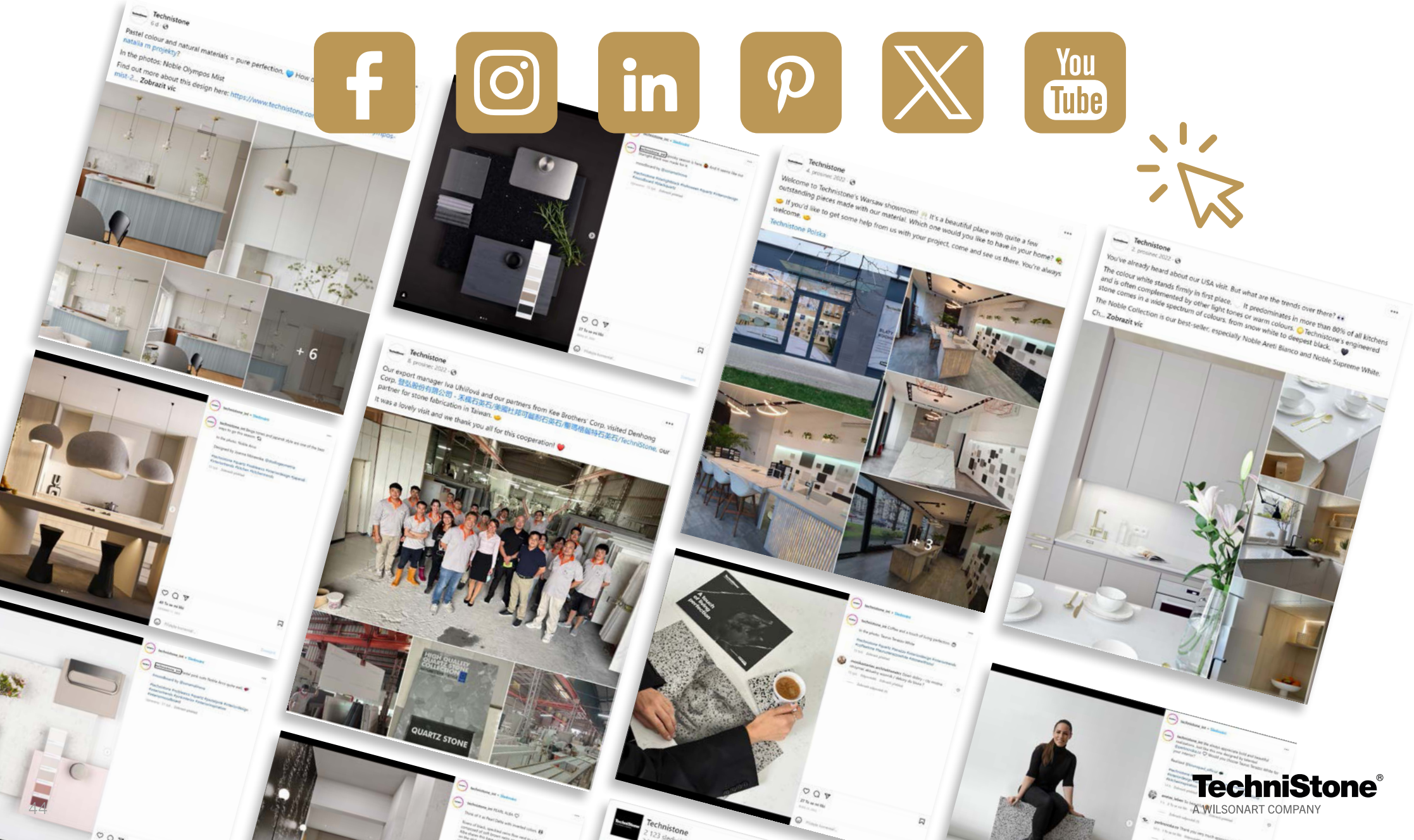


Ambassadors



TechniStone®
A WILSONART COMPANY

Social media





Stone with soul



[Stone With Soul - trailer](#)

TechniStone®
A WILSONART COMPANY

Stone with soul

Engineered stone lives life with us – its owners

It takes many forms – in architecture, modern design, timeless home furnishings

It comes alive through our perceptions. It reflects the individuality – the character, taste, and values – of its owner

It remembers stories – some of which last for only a moment, others that remain inscribed in our minds forever

Where there is life, there is soul, revealed in the story of Stone With Soul

A touch of living perfection – TechniStone® welcomes visitors to its website and on social media. It speaks to the world with its brochures, billboards, manuals, blog articles, and more.



Customer Service

For more information on cleaning and maintenance, and for other technical requirements, please contact us via email: info@matrixsurfaces.ie

phone: +353 (0) 74 939 5877

You can use the online forms provided to register your warranty or make a claim.

The list of frequently asked questions and information about warranties and recommended maintenance will help answer general questions. If you haven't found the answer you were looking for, don't hesitate to contact us!



Customer service



Wilsonart LLC
2501 Wilsonart Drive
Temple, TX 76503-6110
Phone: (800) 433-3222

wilsonart.com

TechniStone®

A WILSONART COMPANY

Customer Support

Phone: +353 (0) 74 939 5877

E-mail: info@matrixsurfaces.ie

Warehouse – Buncrana Ireland

matrixsurfaces.ie

